

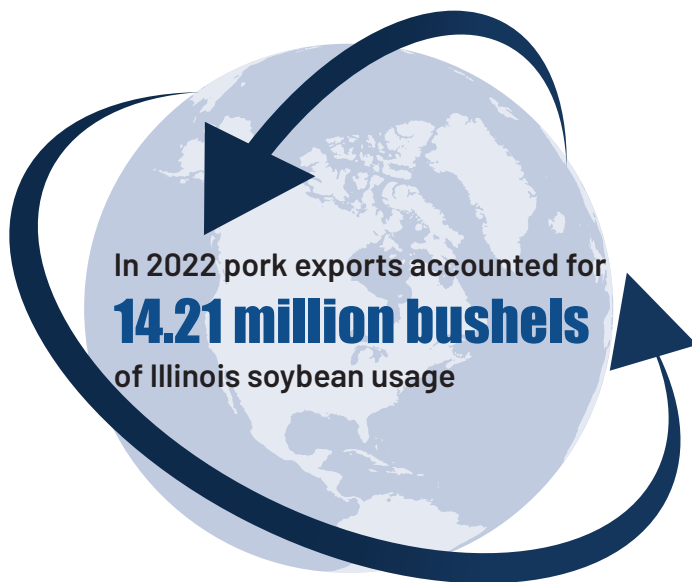
In 2022 the market value of pork exports to  
**Illinois Soybeans = \$210.71 million**

(soybeans consumed by pork exports at average annual soybean price)

14.21 million bushels x \$14.83 per bushel

For the estimated total economic impact:

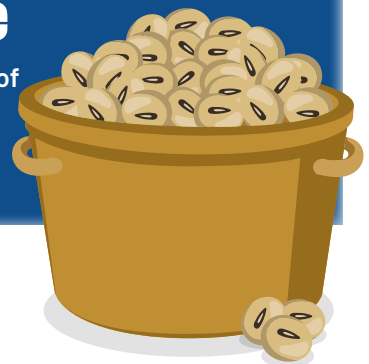
In 2022 pork exports contributed  
**13% of bushel value = \$1.94**  
at an average price of \$14.83 per bushel



U.S. pork exports contributed

**\$122.22 per Illinois  
soybean acre**

at \$1.94/bushel at a yield of  
63 bushels/acre in 2022



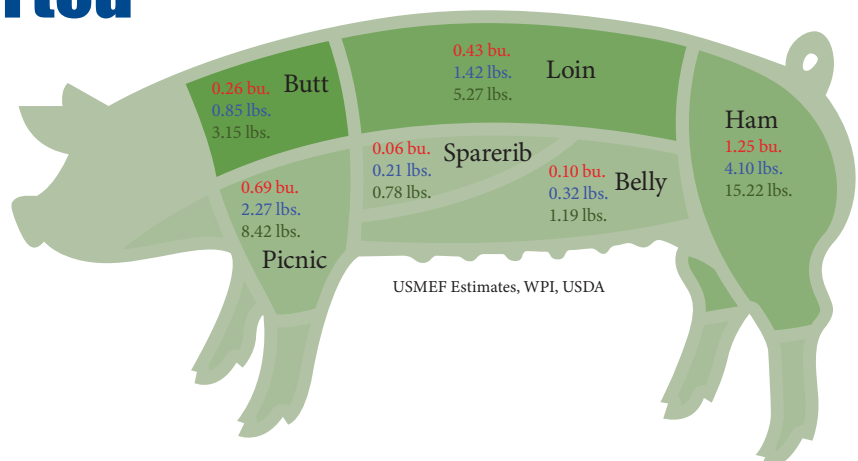
## Feed Use by Cuts Exported

*Per head slaughtered in 2022*

**Bushels of Corn**

**Lbs. of Dried Distillers Grains**

**Lbs. of Soybean Meal**



USMEF Estimates, WPI, USDA



**27.5%**

of U.S. pork and pork variety meat was exported



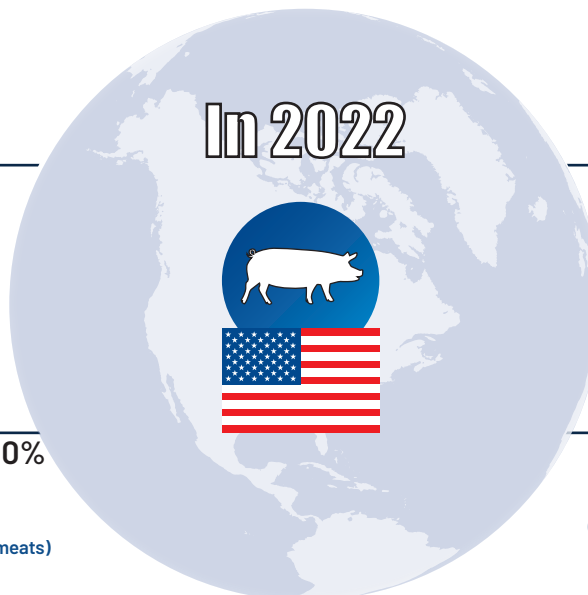
Pork production increased by 10% from 2015, while **pork exports increased by 25%** (including variety meats) during the same time period



**Pork export volume equated to 47 lbs.** per head slaughtered, 9.3 lbs. of which were pork variety meats (export volume divided by 2022 commercial hog slaughter)

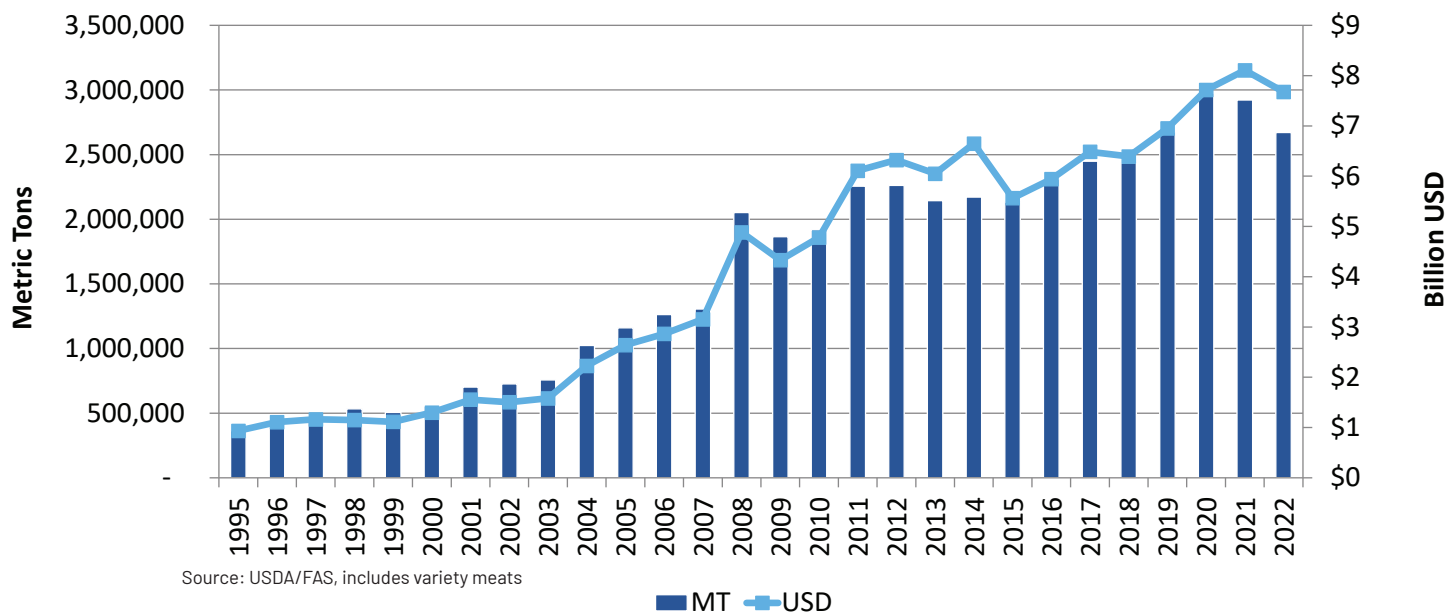


Pork export value equated to **\$61.26 per head** slaughtered (export value divided by 2022 commercial hog slaughter)

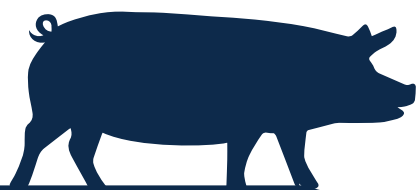


In 2022, pork exports accounted for **2.13 million tons** worth of **soybean meal** use, the equivalent of 89.7 million bushels of soybeans

## U.S. Pork & Variety Meat Exports



***"The soybean industry has been a solid partner in developing international markets for U.S. pork,"*** says USMEF Senior Vice President of Industry Relations John Hinners. ***"This support is critical to the export growth the pork industry has achieved."***



**WORLD PERSPECTIVES**  
FOR THE MEAT INDUSTRY  
**Dave Juday**  
dave@thejudaygroup.com

The U.S. Meat Export Federation (USMEF) is a non-profit trade association that works to create new opportunities and develop existing international markets for U.S. beef, pork and lamb. USMEF is a unique collaboration of nine distinct segments of American agriculture, joining together to implement successful marketing programs for U.S. pork, beef and lamb around the world.

**U.S. Meat Export Federation**  
1660 Lincoln Street, Suite 2800  
Denver, CO 80264  
Tel 303.623.MEAT (6328)  
Fax 303.623.0297  
www.usmef.org

