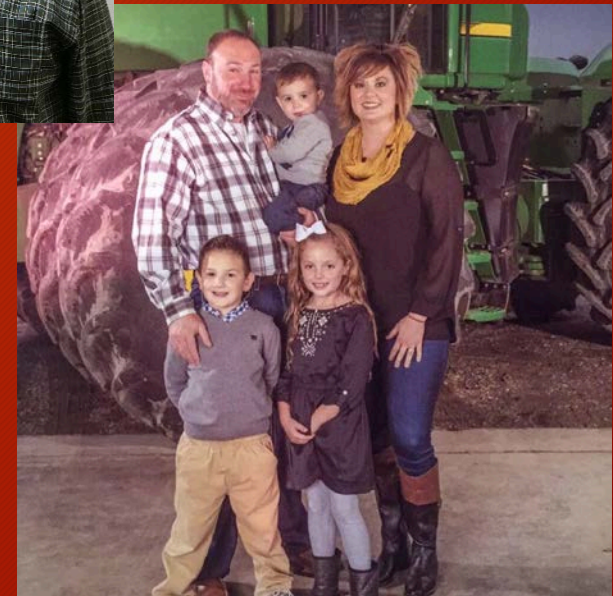
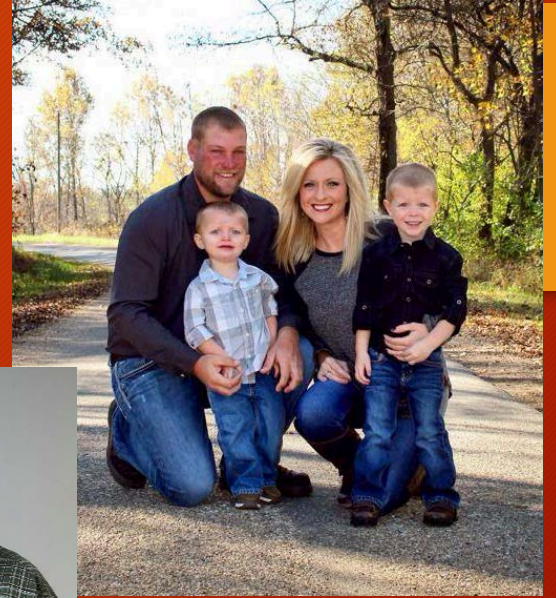


# Borgic Farms, Inc.

Phil Borgic



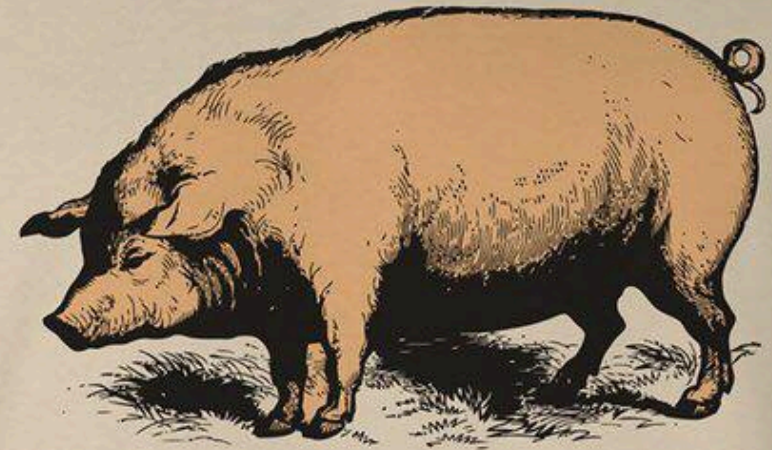




# Scope & Scale

- 6,000 sows at a single location
- 15 grower partners
  - 25 locations, mainly Central Illinois
  - Working with 5 feed mills
  - Majority to 1 packer
- Expansion Opportunities

CONVERTS VEGETABLES



TO BACON.

# What we look for...

- Dedication
- Commitment to Excellence
- Legacy
- Desire to be a part of a family pork system





# A day in the life...

- Everyday includes the basic care of the pigs
- Different stages throughout the pigs' life includes different needs/care
- Daily record keeping of all required tasks



# Our partnership

- Communication across the team
  - Open, two way communication between management and growers
- Information Sharing
  - Closeouts & Sort Loss
- Assisting you with your needs for:
  - Environment
  - SOPs
  - Siting & Permitting



# What Makes us Different?

- “Response-ability”
- Family focused
- Flexibility
- Personal Approach



# From our families to yours...

# Thank You!!



Matt Frizzo  
Cell:  
217-825-6427

Phil Borgic  
Cell:  
217-899-5573

Office:  
217-229-3049

