



THE
MASCHHOFFS



MATT HENRY

SENIOR MANAGER – BUSINESS DEVELOPMENT



IL PORK EXPO

February 1st, 2017

Progressive Farming. Family Style.

The Maschhoffs: Our History



1851

- John & Mary Maschhoff begin farming in Washington county IL

1961

- Wayne & Marlene construct a 700 hd finisher



1992

- Ownership is transferred to Ken, Julie, Dave and Karen Maschhoff

2012

- Jason Logsdon becomes first non family CEO

2013-14

- Creation of Maschhoff Family Foods



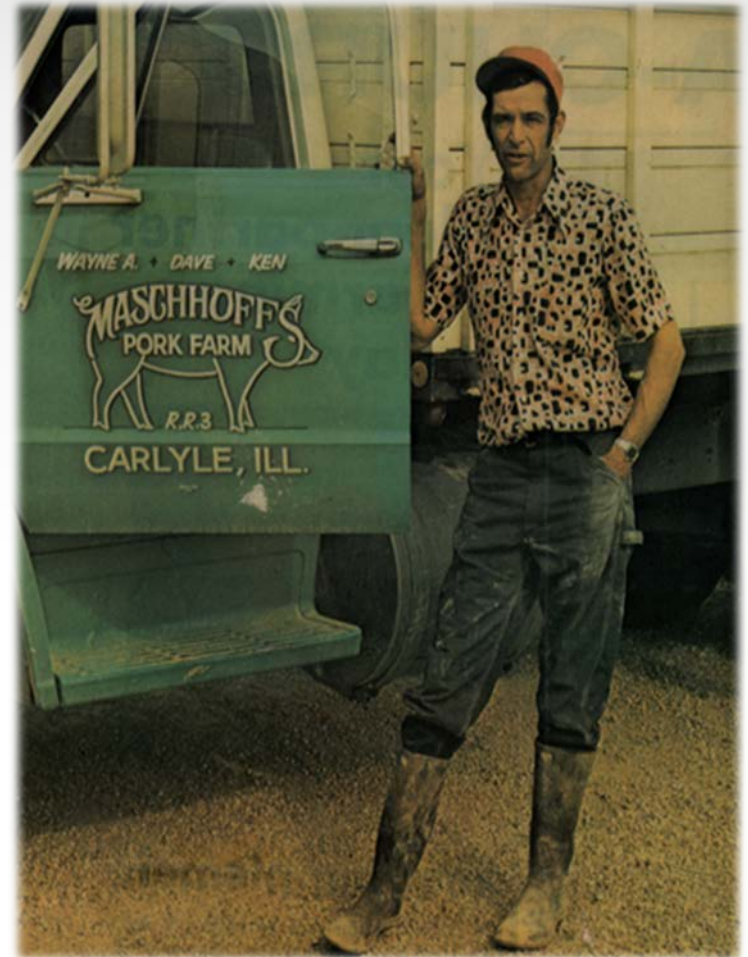


THE MASCHHOFFS



Who Are We??

- Owned 100% by the fifth generation of Maschhoff Family
- Headquartered in Carlyle, IL with operations in 10 states
- Approx. 750 production sites and 600 family farm partners
- About 1,300 employees
- Will sell estimated 5.25 million market hogs in FY15
 - 4.56 million to 3 external customers
 - 275,000 pigs are co-packed annually at Pine Ridge Farms for sale under the Maschhoff Family Farms brand label



Production Partnership Opportunities

- Incredible way to diversify the farming operation
- Excellent opportunity to bring home the next generation
- Provides a stable, long term return
- Fertilizer provides a natural hedge and a competitive advantage for row crop producers
- History of contract pork production is proven

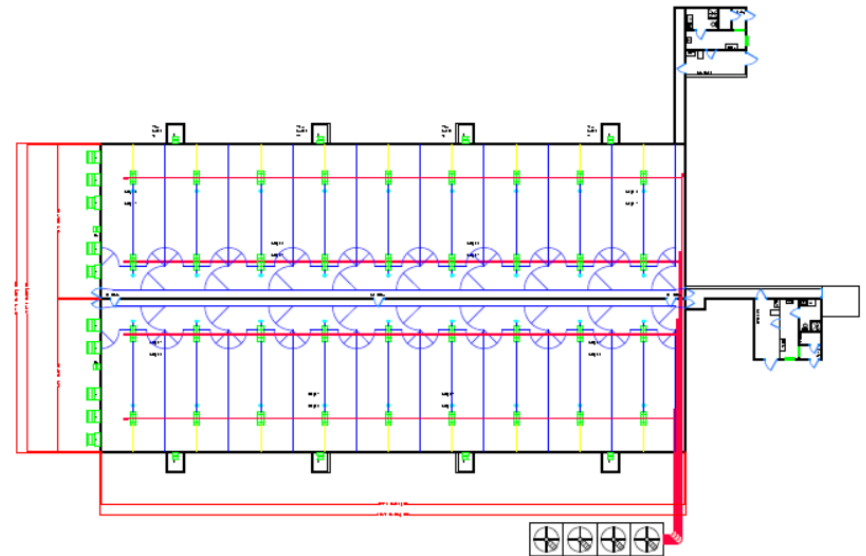
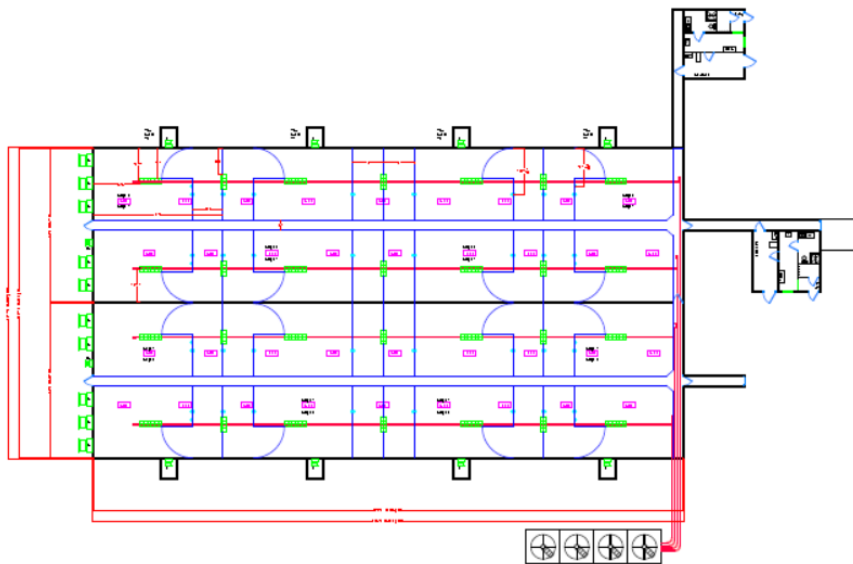


DOCUMENT IS PROPRIETARY/CONFIDENTIAL AND MAY NOT BE USED OR DISTRIBUTED WITHOUT THE EXPLICIT APPROVAL. © 2015 THE MASCHHOFFS, LLC



Product Offering

- Several configurations of 2400 hd barns
 - 80 x 225 Tunnel vent Wean or Feeder barn
 - 100 x 193 Tunnel vent Wean
 - 50 x 380 Power Natural vent Wean or Feeder barn



Expectation & Resources

- We provide anything that goes in/on the pig. Feed, vaccines, needles, syringes, marking sprays and all transport
- You provide facilities, utilities and all labor to care for and manage the pigs



- We can provide turn key permitting thru Maschhoff Environmental Inc. (MEI).
- Proprietary environmental data system with GIS mapping
- Annual environmental assessments for production partners
- NPB and NPPC Environmental Committee Participants
- Project Management
- Our field staff if there to Train, Teach & Coach



[ABOUT US](#)[CARING FOR ANIMALS](#)[ENVIRONMENTAL STEWARDSHIP](#)[ECONOMIC IMPACT](#)[PRODUCTION PARTNERSHIPS](#)[CAREERS](#)[PRESS ROOM](#)[Become a Production Partner](#)[Experience in Design](#)[Production Partner Support](#)

WELCOME TO



It's who we are and what we're about. It's about doing things right, being innovative, working with others, being a leader and a good neighbor.

We're The Maschhoffs. In 1851, our ancestors came to this area and began a family farming tradition. Today, we manage one of the largest family-owned pork farming networks in the United States, producing enough pork to feed eight million consumers annually.

We're proud to be a progressive force working with family farmers across the Midwest. If you are interested in joining our network of family pork farmers, please see Production Partnerships.



[Click Here For
Corn & Wheat
Bids](#)





Matt Henry
Senior Manager – Business Development
618-322-5315
matt.henry@pigsrus.net